



## European Commission

Directorate General Regional Policy  
Directorate General Employment, Social Affairs and Inclusion  
Directorate General Agricultural and Rural Development  
Directorate General Fisheries and Maritime Affairs  
Directorate General Home and Internal Affairs

# European Commission

## SFC2007 Node Hierarchies

Date: 23/04/2012  
Version: 1.7  
Authors: Eric Derruine, Eric Kilian  
Revised by:  
Approved by:  
Public:  
Reference Number: SFC2007-PM-106

## Change History

<b>Revision</b>	<b>Date</b>	<b>Description</b>	<b>Author</b>	<b>Status</b>
0.1	17/07/2006	First draft	E. Derruine (EMPL/H/4)	Draft
0.2	28/07/2006	Added some definitions and new nodes for 2 new Member States	E. Kilian	Draft
0.3	31/07/2006	Renamed nodes GB* to UK*. Added extra info.	E. Kilian	Draft
0.4	16/11/2006	modification of German nodes	C. Chaparro	Draft
1.0	13/02/2007	New nodes for France and Spain	E. Kilian	Draft
1.1	22/02/2007	New nodes for Denmark	C Chaparro	Draft
1.2	11/04/2008	adding the procedure for requesting changes to existing node structure, updating of nodes list (CC)	C Chaparro	Draft
1.3	06/11/2008	New nodes for Italy	S Joffre	Draft
1.4	26/08/2009	New Cross Border Nodes for Spain	S Joffre	Draft
1.5	26/10/2009	New Nodes for Greece	S Joffre	Draft
1.6	08/02/2010	Node DE for Germany (AS and NSRF)	C. Chaparro Ramirez	Draft
1.7	23/04/2012	SOLID and IPA Nodes	E. Kilian	

## TABLE OF CONTENTS

1. INTRODUCTION .....	4
2. NODE HIERARCHIES.....	4
3. NODE HIERARCHIES IMPLEMENTED IN THE SFC2007 SYTEM .....	5
3.1. Workflow Hierarchy.....	6
3.2. Consultation Hierarchy.....	11

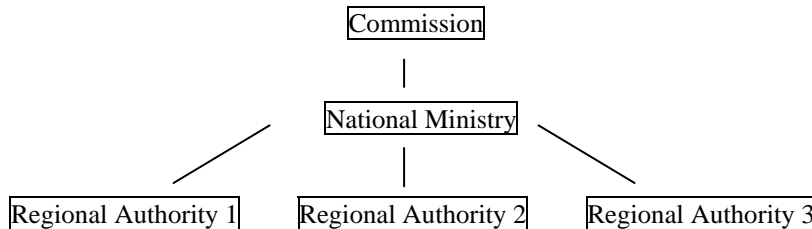
## 1. INTRODUCTION

This document describes the concept of Nodes and their Hierarchies, shows the current Node Hierarchies used in the SFC system for the period 2000-2006 and will eventually list the Node Hierarchies to be implemented in the SFC2007 system.

## 2. NODE HIERARCHIES

Depending on the political/geographical organisation of each country, a Member State can manage in the context of the SFC2007 application, business objects in a centralised or decentralised manner.

To represent all the Member States and the possible decentralisations inside each Member State, the notion of a Node has been introduced. A Node is a collection of users, representing the Commission, a Member State, a region or a local Authority. Each user of the system belongs to one Node. Countries with a centralised management structure will only have one Node, while other countries with a more decentralised structure could have a lot of them.



The Nodes are organised into a tree hierarchy. The root represents the Commission Node while the leaves represent Member States, regions or local authorities Nodes.

The SFC2007 system has two Node Hierarchies, one dedicated to the consultation of objects and one for workflow operations on the objects. Each Node is defined in both Hierarchies.

For a number of Member States, the hierarchical structure is different when it concerns data manipulation or data consultation. Therefore, the system distinguishes between a Workflow Hierarchy and a Consultation Hierarchy.

The **Workflow Hierarchy** (see example in section 3.1) indicates the workflow to be followed to submit a given object (NSRF, OP, Payment Request, etc) from the Node having initiated the operation to the European Commission Node. It determines where an object can be manipulated and where it is sent to or rejected to.

In fact, workflow actions can only be performed against an object in the Node where it currently resides. An object moves from Node to Node as defined by the Workflow Hierarchy. When a user working on his node is ready with updating the object, he will send the object to the upper Node, where it will become available for the users defined on that upper Node. The different actions allowed against an object are in function of the status of the object and are in a logical order, Create → Edit → Validate → Send.

Example: A given Operational Programme could be created, edited, validated in a decentralised Node in Germany (DE02 – Land of Hamburg) but could need to be sent to the national Node (DE – Federal German authority) where it can be edited and validated again, before being officially sent to the European Commission Node (EC). Therefore, the Workflow Hierarchy shows a branch from DE02 over DE to EC. If the decentralised Node DE02 would have the authority to directly send the OP to the Commission, without the need for the national authority to validate or update the data, then the DE02 Node would have to be directly linked to the Commission Node EC in the Workflow Hierarchy.

The **Consultation Hierarchy** (see example in section 3.2) determines which Nodes can consult the objects being created in the system. An object can be consulted in any node which lies on the branches between the object creation Node and the Commission Node. This means that a Node can always consult objects that were created in his lower Nodes as defined in the Consultation Hierarchy.

Example: Users in the node FR (central node for France) can consult all the "objects" present in the French regional Nodes. But a user in the regional node FRAL (Alsace) cannot consult objects that are created in another regional node like FRCO (Corse).

The Consultation Hierarchy will be different from the Workflow Hierarchy for those countries where the decentralised Nodes have the authority to directly send objects to the Commission, while the national authority still needs to have a view on all objects managed in the Member State.

### 3. NODE HIERARCHIES IMPLEMENTED IN THE SFC2007 SYSTEM

In the SFC2007 system for the 2007-2013 period, the Node Hierarchies were initially setup (July 2006) as the ones for the 2000-2006 period. They have since been updated to reflect the current management and organisational structures of the Member States in order to accommodate regional management and territorial cooperation programmes. For new Member States entering the SFC2007 system and for those whose political or organisational structures have been changed, another hierarchy can be implemented on demand.

The request of changes to the existing nodes hierarchy has to be done as follows:

- (1) An E-mail has to be sent by the MS liaison to the SFC2007 Support service: [sfc2007-info@ec.europa.eu](mailto:sfc2007-info@ec.europa.eu).

The request must contain:

- The existing hierarchy nodes and the names and codes for the new hierarchy nodes (Example: Code: DEB01 Name: Schleswig-Holstein)
  - The hierarchy levels and sub levels (please refer to figure shown in chapter 2) and the differences in *workflow* and *consultation* hierarchy if any.
  - If existing, the Operational programmes (by CCI) to be moved from the existing nodes to the new nodes.
- (2) After analysis of feasibility by the SFC2007 Team, the requested change will be applied in SFC2007 and the MS liaison will be informed. This process takes max 1 working week.

### 3.1. Workflow Hierarchy

Node	Name
EC	European Commission(2)
.AT	Austria(41)
.BE	Belgium(5)
.BEBC	Brussels Capital(8)
.BECF	French Community(7)
.BECG	German Community(10)
.BEGR	Great Region(246)
.BEIPA	IPA Cross-Border(283)
.BERW	Walloon Region(9)
.BEVG	Flemish Community(6)
.BG	Balgarija(106)
.CH	Switzerland(285)
.CY	Cyprus(76)
.CZ	Ceska Republika(74)
.DE	Germany(150)
.DEA	Germany (EAFRD+EFF)(145)
..DEA01	Bundesanstalt für Landwirtschaft und Ernährung(146)
..DEA02	Hauptzollamt Hamburg-Jonas(147)
..DEA03	Baden-Württemberg(148)
..DEA04	Bayern(149)
..DEA06	Berlin(152)
..DEA07	Brandenburg(153)
..DEA08	Bremen(154)
..DEA09	Hamburg(155)
..DEA10	Hessen(156)
..DEA11	Mecklenburg-Vorpommern(151)
..DEA12	Niedersachsen(158)
..DEA15	Nordrhein-Westfalen(159)
..DEA17	Rheinland-Pfalz(160)
..DEA18	Saarland(161)
..DEA19	Sachsen(162)
..DEA20	Sachsen-Anhalt(163)
..DEA21	Schleswig-Holstein(164)
..DEA23	Thüringen(165)
.DEB	Germany (ERDF+CF)(12)
..DEB01	Schleswig-Holstein(13)
..DEB02	Hamburg(18)
..DEB03	Niedersachsen(19)
..DEB04	Bremen(20)
..DEB05	Nordrhein-Westfalen(32)
..DEB06	Hessen(21)
..DEB07	Rheinland-Pfalz(22)
..DEB08	Baden-Württemberg(23)
..DEB09	Bayern(24)
..DEB10	Saarland(25)
..DEB11	Berlin(26)
..DEB12	Mecklenbrug-Vorpommern(27)
..DEB13	Brandenburg(28)

..DEB14	Sachsen-Anhalt(29)
..DEB15	Thüringen(30)
..DEB16	Sachsen(31)
..DEB17	BMVBS - Bundes-OP ERDF (Verkehr)(33)
.DEC	Germany (ESF)(127)
..DEC01	Schleswig-Holstein(128)
..DEC02	Hamburg(129)
..DEC03	Niedersachsen(130)
..DEC04	Bremen(131)
..DEC05	Nordrhein-Westfalen(143)
..DEC06	Hessen(132)
..DEC07	Rheinland-Pfalz(133)
..DEC08	Baden-Württemberg(134)
..DEC09	Bayern(135)
..DEC10	Saarland(136)
..DEC11	Berlin(137)
..DEC12	Mecklenburg-Vorpommern(138)
..DEC13	Brandenburg(139)
..DEC14	Sachsen-Anhalt(140)
..DEC15	Thüringen(141)
..DEC16	Sachsen(142)
..DEC18	BMAS - Bundes-OP ESF(144)
.DED01	Mecklenburg-Vorpommern-Polen(166)
.DED02	Sachsen-Poland(167)
.DED03	Sachsen-Tschechien(168)
.DED04	Bayern-Tschechien(169)
.DED05	Alpenrhein-Bodensee-Hochrhein(170)
.DED06	Euregio Ems-Dollart, Rhein-Maas-Nord(171)
.DED07	Baltic Sea Region programme(172)
.DK	Denmark(34)
.DK1	North Sea Region Programme 2007-2013(222)
.DK2	INTERREG IV Syddanmark-Schleswig-K.E.R.N.(223)
.DK3	INTERREG IV Sjælland-Ostholstein-Lübeck-Plön(224)
.E3	Data Entry Unit(3)
.EE	Eesti(75)
.EE01	Estonia (European Territorial Cooperation)(225)
.ES	España(40)
..ES11	Galicia(202)
..ES12	Principado de Asturias(203)
..ES13	Cantabria(204)
..ES21	País Vasco(205)
..ES22	Comunidad Foral de Navarra(206)
..ES23	La Rioja(207)
..ES24	Aragón(208)
..ES30	Comunidad de Madrid(209)
..ES41	Castilla y León(210)
..ES42	Castilla-la Mancha(211)
..ES43	Extremadura(212)
..ES51	Cataluña(213)
..ES52	Comunidad Valenciana(214)
..ES53	Iles Balears(215)
..ES61	Andalucía(216)
..ES62	Región de Murcia(217)

..ES63	Ciudad Autónoma de Ceuta(218)
..ES64	Ciudad Autónoma de Melilla(219)
..ES70	Canarias(220)
.FI	Finland(42)
.FI01	Åland(67)
.FR	France(284)
.FRA	France (EAFRD)(173)
..FRACO	Corse(179)
..FRAGA	Guadeloupe(177)
..FRAGY	Guyane(174)
..FRAHX	France Hexagonal(180)
..FRAMA	Martinique(176)
..FRARU	Réunion(175)
.FRAEG	France RP - Politique régionale(35)
..FRAER	SGAE - TREG(201)
...FRADC	DIAC-T-MINOM-MIAT-DGEFP-MINEFI-CICC (200)
....FR1GA	Guadeloupe(68)
....FR1GY	Guyane(69)
....FR1MA	Martinique(71)
....FR1RE	Réunion(70)
....FR2AL	Alsace(86)
....FR2AQ	Aquitaine(98)
....FR2AU	Auvergne(87)
....FR2BN	Basse-Normandie(92)
....FR2BO	Bourgogne(100)
....FR2BR	Bretagne(99)
....FR2CA	Champagne-Ardenne(95)
....FR2CE	Centre(101)
....FR2CO	Corse(85)
....FR2FC	Franche-Comté(97)
....FR2HN	Haute-Normandie(93)
....FR2IF	Ile-de-France(102)
....FR2LI	Limousin(89)
....FR2LO	Lorraine(88)
....FR2LR	Languedoc-Rousillon(94)
....FR2MP	Midi-Pyrénées(103)
....FR2NP	Nord-Pas-de-Calais(84)
....FR2PA	Provence-Aples-Côte d'Azur(96)
....FR2PC	Poitou-Charentes(91)
....FR2PI	Picardie(104)
....FR2PL	Pays de Loire(90)
....FR2RA	Rhône-Alpes(105)
....FR3CA	Caraïbes(193)
....FR3FS	France - Suisse(191)
....FR3GB	Guyane - Brésil - Surinam(194)
....FR3IC	INTERREG IVC(198)
....FR3MA	Manche(188)
....FR3ME	MED - Méditerranée(196)
....FR3MN	Manche - Mer du Nord(189)
....FR3NO	ENO - Europe du Nord Ouest(195)
....FR3OI	Océan Indien(192)
....FR3RS	Rhin supérieur(190)
....FR3UR	URBACT(197)



....FRFSE	FSE National(199)
....FRNAT	PNAT(187)
....FRPAL	Plurirégional Alpes(185)
....FRPMC	Plurirégional Massif Central(181)
....FRPPL	Plurirégional Loire(184)
....FRPRH	Plurirégional Rhônes(186)
.FRB	France (EFF)(221)
.GR	Greece(36)
.GRC	Greece (Structural Central)(228)
..GRI	Greece (Interregional Central)(239)
...GRI01	Greece - Albania(275)
...GRI02	Greece - Bulgaria(276)
...GRI03	Greece - Cyprus(277)
...GRI04	Greece - FYROM(278)
...GRI05	Greece - Italy(279)
..GRP01	Greece (Human Resource)(230)
..GRP02	Greece (Education)(231)
..GRP03	Greece (Public Administration)(232)
..GRP04	Greece (Competitiveness)(233)
..GRP05	Greece (Digital Convergence)(234)
..GRP06	Greece (Transport)(235)
..GRP07	Greece (Environment)(236)
..GRP08	Greece (Technical Support)(237)
..GRP09	Greece (Contingency Reserve)(238)
..GRR	Greece (Regional Central)(229)
...GRP11	Greece (Attica)(240)
...GRP12	Greece (Western-Peloponnesse-Ionia)(241)
...GRP13	Greece (Macedonia-Thrace)(242)
...GRP14	Greece (Thessalia-Epirus-Sterea)(243)
...GRP15	Greece (Crete-Aegean Islands)(244)
.HR	Republic of Croatia(249)
.HU	Magyarország(79)
.IE	Ireland(37)
.IS	Iceland(286)
.IT	Italy(14)
..IT01	Abruzzo(44)
..IT02	Basilica(45)
..IT03	Calabria(46)
..IT04	Campania(47)
..IT05	Emilia(48)
..IT06	Friuli(49)
..IT07	Lazio(50)
..IT08	Liguria(51)
..IT09	Lombardi(52)
..IT12	Marche(53)
..IT13	Molise(54)
..IT14	Piemonte(15)
..IT15	Puglia(55)
..IT16	Sardegna(56)
..IT17	Sicilia(57)
..IT18	Toscana(58)
..IT19	Bolzano(59)
..IT20	Trento(60)

..IT21	Umbria(61)
..IT22	Veneto(62)
..IT26	Aosta(63)
..IT31	PO Italia-Francia Frontiera Marittima(251)
..IT32	PO Italia-Francia Alpi (ALCOTRA)(252)
..IT33	PO Italia-Svizzera(253)
..IT34	PO Italia-Slovenia(254)
..IT35	PO Italia-Malta(255)
..IT36	PO IPA-CBC-Adriatico(256)
..IT37	PO IPA-Tunisia(257)
..IT38	PO IPA-Austria(258)
..IT61	Pon Governance e AT FSE(259)
..IT62	Pon Istruzione FSE(260)
..IT63	Pon Azioni di sistema(261)
..IT64	Rete Rurale Nazionale 2007-2013(262)
..IT65	Programma Operativo FEP(263)
..IT66	Pon Governance e AT FESR(264)
..IT67	Pon Istruzione FESR(265)
..IT68	Pon Reti e mobilita'(266)
..IT69	Pon Ricerca e competitivita'(267)
..IT70	Pon Sicurezza(268)
..IT80	POIN Energia rinnovabile e risparmio energetico(270)
..IT81	POIN Attrattori culturali, naturali e turismo(271)
..IT90	PO ENPI-CBC-Bacino Mediterraneo(272)
.LT	Lietuva(78)
.LU	Luxembourg(38)
.LUES	Espon(72)
.LV	Latvija(77)
.MK	Former Yugoslav Republic of Macedonia(250)
.MT	Malta(80)
.NL	The Netherlands(11)
.NLEMR	Euregio Maas Rijn(288)
.NO	Norway(287)
.PL	Polska(81)
.POEP	PO FEDER Cooperación Transfronteriza España-Portugal(274)
.POMAC	PO FEDER Cooperación Transnacional Maderia-Azores-Canarias(273)
.PT	Portugal(39)
.RG01	Peace(73)
.RO	România(4)
.SE	Sweden(43)
.SI	Slovenija(82)
.SK	Slovenská Republica(83)
.SKCB	Interact(269)
.TR	Republic of Turkey(248)
.UK	United Kingdom(16)
.UK01	Northern-Ireland(17)
.UK02	Scotland(64)
.UK03	Wales(65)
.UK04	England(66)
.UK05	Gibraltar(226)

### 3.2. Consultation Hierarchy

Node	Name
EC	European Commission(2)
.AT	Austria(41)
.BE	Belgium(5)
..BEBC	Brussels Capital(8)
..BECF	French Community(7)
..BECG	German Community(10)
..BERW	Walloon Region(9)
..BEVG	Flemish Community(6)
.BEGR	Great Region(246)
.BEIPA	IPA Cross-Border(283)
.BG	Balgarija(106)
.CH	Switzerland(285)
.CY	Cyprus(76)
.CZ	Ceska Republika(74)
.DE	Germany(150)
..DEB	Germany (ERDF+CF)(12)
...DEB01	Schleswig-Holstein(13)
...DEB02	Hamburg(18)
...DEB03	Niedersachsen(19)
...DEB04	Bremen(20)
...DEB05	Nordrhein-Westfalen(32)
...DEB06	Hessen(21)
...DEB07	Rheinland-Pfalz(22)
...DEB08	Baden-Württemberg(23)
...DEB09	Bayern(24)
...DEB10	Saarland(25)
...DEB11	Berlin(26)
...DEB12	Mecklenbrug-Vorpommern(27)
...DEB13	Brandenburg(28)
...DEB14	Sachsen-Anhalt(29)
...DEB15	Thüringen(30)
...DEB16	Sachsen(31)
...DEB17	BMVBS - Bundes-OP ERDF (Verkehr)(33)
..DEC	Germany (ESF)(127)
...DEC01	Schleswig-Holstein(128)
...DEC02	Hamburg(129)
...DEC03	Niedersachsen(130)
...DEC04	Bremen(131)
...DEC05	Nordrhein-Westfalen(143)
...DEC06	Hessen(132)
...DEC07	Rheinland-Pfalz(133)
...DEC08	Baden-Württemberg(134)
...DEC09	Bayern(135)
...DEC10	Saarland(136)
...DEC11	Berlin(137)
...DEC12	Mecklenburg-Vorpommern(138)
...DEC13	Brandenburg(139)
...DEC14	Sachsen-Anhalt(140)

...DEC15	Thüringen(141)
...DEC16	Sachsen(142)
...DEC18	BMAS - Bundes-OP ESF(144)
..DEA	Germany (EAFRD+EFF)(145)
..DEA01	Bundesanstalt für Landwirtschaft und Ernährung(146)
..DEA02	Hauptzollamt Hamburg-Jonas(147)
..DEA03	Baden-Württemberg(148)
..DEA04	Bayern(149)
..DEA06	Berlin(152)
..DEA07	Brandenburg(153)
..DEA08	Bremen(154)
..DEA09	Hamburg(155)
..DEA10	Hessen(156)
..DEA11	Mecklenburg-Vorpommern(151)
..DEA12	Niedersachsen(158)
..DEA15	Nordrhein-Westfalen(159)
..DEA17	Rheinland-Pfalz(160)
..DEA18	Saarland(161)
..DEA19	Sachsen(162)
..DEA20	Sachsen-Anhalt(163)
..DEA21	Schleswig-Holstein(164)
..DEA23	Thüringen(165)
..DED01	Mecklenburg-Vorpommern-Polen(166)
..DED02	Sachsen-Poland(167)
..DED03	Sachsen-Tschechien(168)
..DED04	Bayern-Tschechien(169)
..DED05	Alpenrhein-Bodensee-Hochrhein(170)
..DED06	Euregio Ems-Dollart, Rhein-Maas-Nord(171)
..DED07	Baltic Sea Region programme(172)
..DK	Denmark(34)
..DK1	North Sea Region Programme 2007-2013(222)
..DK2	INTERREG IV Syddanmark-Schleswig-K.E.R.N.(223)
..DK3	INTERREG IV Sjælland-Ostholstein-Lübeck-Plön(224)
..E3	Data Entry Unit(3)
..EE	Eesti(75)
..EE01	Estonia (European Territorial Cooperation)(225)
..ES	España(40)
..ES11	Galicia(202)
..ES12	Principado de Asturias(203)
..ES13	Cantabria(204)
..ES21	País Vasco(205)
..ES22	Comunidad Foral de Navarra(206)
..ES23	La Rioja(207)
..ES24	Aragón(208)
..ES30	Comunidad de Madrid(209)
..ES41	Castilla y León(210)
..ES42	Castilla-la Mancha(211)
..ES43	Extremadura(212)
..ES51	Cataluña(213)
..ES52	Comunidad Valenciana(214)
..ES53	Iles Balears(215)
..ES61	Andalucía(216)
..ES62	Región de Murcia(217)

..ES63	Ciudad Autónoma de Ceuta(218)
..ES64	Ciudad Autónoma de Melilla(219)
..ES70	Canarias(220)
.FI	Finland(42)
..FI01	Åland(67)
.FR	France(284)
.FRA	France (EAFRD)(173)
..FRACO	Corse(179)
..FRAGA	Guadeloupe(177)
..FRAGY	Guyane(174)
..FRAHX	France Hexagonal(180)
..FRAMA	Martinique(176)
..FRARU	Réunion(175)
.FRAEG	France RP - Politique régionale(35)
..FRAER	SGAE - TREG(201)
...FRADC	DIAC-T-MINOM-MIAT-DGEFP-MINEFI-CICC (200)
....FR1GA	Guadeloupe(68)
....FR1GY	Guyane(69)
....FR1MA	Martinique(71)
....FR1RE	Réunion(70)
....FR2AL	Alsace(86)
....FR2AQ	Aquitaine(98)
....FR2AU	Auvergne(87)
....FR2BN	Basse-Normandie(92)
....FR2BO	Bourgogne(100)
....FR2BR	Bretagne(99)
....FR2CA	Champagne-Ardenne(95)
....FR2CE	Centre(101)
....FR2CO	Corse(85)
....FR2FC	Franche-Comté(97)
....FR2HN	Haute-Normandie(93)
....FR2IF	Ile-de-France(102)
....FR2LI	Limousin(89)
....FR2LO	Lorraine(88)
....FR2LR	Languedoc-Rousillon(94)
....FR2MP	Midi-Pyrénées(103)
....FR2NP	Nord-Pas-de-Calais(84)
....FR2PA	Provence-Aples-Côte d'Azur(96)
....FR2PC	Poitou-Charentes(91)
....FR2PI	Picardie(104)
....FR2PL	Pays de Loire(90)
....FR2RA	Rhône-Alpes(105)
....FR3CA	Caraïbes(193)
....FR3FS	France - Suisse(191)
....FR3GB	Guyane - Brésil - Surinam(194)
....FR3IC	INTERREG IVC(198)
....FR3MA	Manche(188)
....FR3ME	MED - Méditerranée(196)
....FR3MN	Manche - Mer du Nord(189)
....FR3NO	ENO - Europe du Nord Ouest(195)
....FR3OI	Océan Indien(192)
....FR3RS	Rhin supérieur(190)
....FR3UR	URBACT(197)

....FRFSE	FSE National(199)
....FRNAT	PNAT(187)
....FRPAL	Plurirégional Alpes(185)
....FRPMC	Plurirégional Massif Central(181)
....FRPPL	Plurirégional Loire(184)
....FRPRH	Plurirégional Rhône(186)
.FRB	France (EFF)(221)
.GR	Greece(36)
.GRC	Greece (Structural Central)(228)
..GRI	Greece (Interregional Central)(239)
...GRI01	Greece - Albania(275)
...GRI02	Greece - Bulgaria(276)
...GRI03	Greece - Cyprus(277)
...GRI04	Greece - FYROM(278)
...GRI05	Greece - Italy(279)
..GRP01	Greece (Human Resource)(230)
..GRP02	Greece (Education)(231)
..GRP03	Greece (Public Administration)(232)
..GRP04	Greece (Competitiveness)(233)
..GRP05	Greece (Digital Convergence)(234)
..GRP06	Greece (Transport)(235)
..GRP07	Greece (Environment)(236)
..GRP08	Greece (Technical Support)(237)
..GRP09	Greece (Contingency Reserve)(238)
..GRR	Greece (Regional Central)(229)
...GRP11	Greece (Attica)(240)
...GRP12	Greece (Western-Peloponnesse-Ionia)(241)
...GRP13	Greece (Macedonia-Thrace)(242)
...GRP14	Greece (Thessalia-Epirus-Sterea)(243)
...GRP15	Greece (Crete-Aegean Islands)(244)
.HR	Republic of Croatia(249)
.HU	Magyarország(79)
.IE	Ireland(37)
.IS	Iceland(286)
.IT	Italy(14)
..IT01	Abruzzo(44)
..IT02	Basilica(45)
..IT03	Calabria(46)
..IT04	Campania(47)
..IT05	Emilia(48)
..IT06	Friuli(49)
..IT07	Lazio(50)
..IT08	Liguria(51)
..IT09	Lombardi(52)
..IT12	Marche(53)
..IT13	Molise(54)
..IT14	Piemonte(15)
..IT15	Puglia(55)
..IT16	Sardegna(56)
..IT17	Sicilia(57)
..IT18	Toscana(58)
..IT19	Bolzano(59)
..IT20	Trento(60)

..IT21	Umbria(61)
..IT22	Veneto(62)
..IT26	Aosta(63)
..IT31	PO Italia-Francia Frontiera Marittima(251)
..IT32	PO Italia-Francia Alpi (ALCOTRA)(252)
..IT33	PO Italia-Svizzera(253)
..IT34	PO Italia-Slovenia(254)
..IT35	PO Italia-Malta(255)
..IT36	PO IPA-CBC-Adriatico(256)
..IT37	PO IPA-Tunisia(257)
..IT38	PO IPA-Austria(258)
..IT61	Pon Governance e AT FSE(259)
..IT62	Pon Istruzione FSE(260)
..IT63	Pon Azioni di sistema(261)
..IT64	Rete Rurale Nazionale 2007-2013(262)
..IT65	Programma Operativo FEP(263)
..IT66	Pon Governance e AT FESR(264)
..IT67	Pon Istruzione FESR(265)
..IT68	Pon Reti e mobilita'(266)
..IT69	Pon Ricerca e competitivita'(267)
..IT70	Pon Sicurezza(268)
..IT80	POIN Energia rinnovabile e risparmio energetico(270)
..IT81	POIN Attrattori culturali, naturali e turismo(271)
..IT90	PO ENPI-CBC-Bacino Mediterraneo(272)
.LT	Lietuva(78)
.LU	Luxembourg(38)
.LUES	Espon(72)
.LV	Latvija(77)
.MK	Former Yugoslav Republic of Macedonia(250)
.MT	Malta(80)
.NL	The Netherlands(11)
.NLEMR	Euregio Maas Rijn(288)
.NO	Norway(287)
.PL	Polska(81)
.POEP	PO FEDER Cooperación Transfronteriza España-Portugal(274)
.POMAC	PO FEDER Cooperación Transnacional Maderia-Azores-Canarias(273)
.PT	Portugal(39)
.RG01	Peace(73)
.RO	România(4)
.SE	Sweden(43)
.SI	Slovenija(82)
.SK	Slovenská Republica(83)
.SKCB	Interact(269)
.TR	Republic of Turkey(248)
.UK	United Kingdom(16)
..UK01	Northern-Ireland(17)
..UK02	Scotland(64)
..UK03	Wales(65)
..UK04	England(66)
..UK05	Gibraltar(226)