

Version 4.6.2 (20/01/2012)

CHANGES	1
▪ EAFRD INCREASED CO-FINANCING RATES FOR MEMBER STATES WITH FINANCIAL STABILITY PROBLEMS	1
NEW FUNCTIONALITY	1
▪ ADD OPERATIONAL PROGRAMME(S) TO A MAJOR PROJECT (ERDF/CF).....	1

CHANGES

- **EAFRD increased co-financing rates for Member States with financial stability problems**

Different co-financing rates will apply for Programmes of Member States with financial stability problems (Council Regulation (EC) No 1312/2011).

The implementation of OP validation rule 2.24 has been modified. Check the contents of this rule in the quick guide available on the [help page](#) of sfc2007.

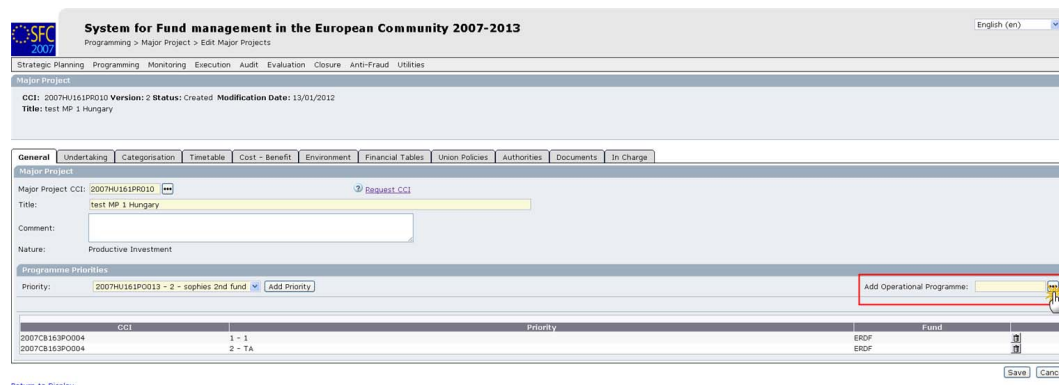
For these Programmes the Quarterly Declaration will be linked to the last adopted OP present at the last date of the Expenses Period.

NEW FUNCTIONALITY

- **Add Operational Programme(s) to a Major Project (ERDF/CF)**

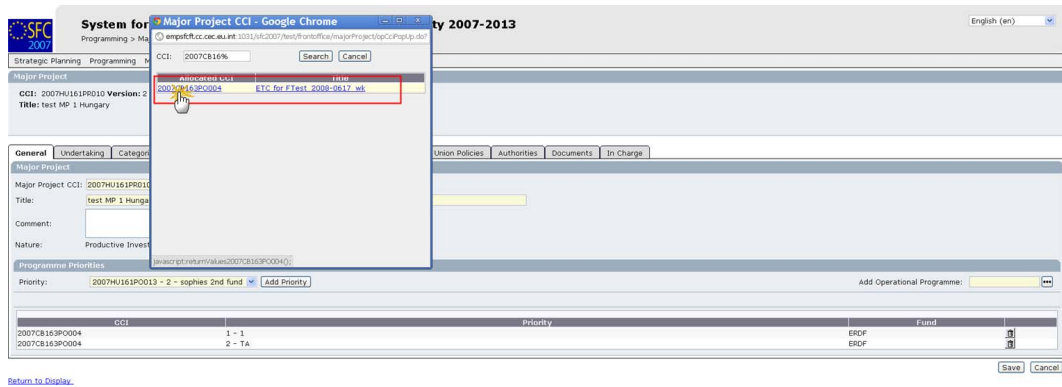
This functionality allows the user to add one or more Operational Programmes to an existing Major Project.

A button "**Add Operational Programme**" has been added on the Major Project general edit page.

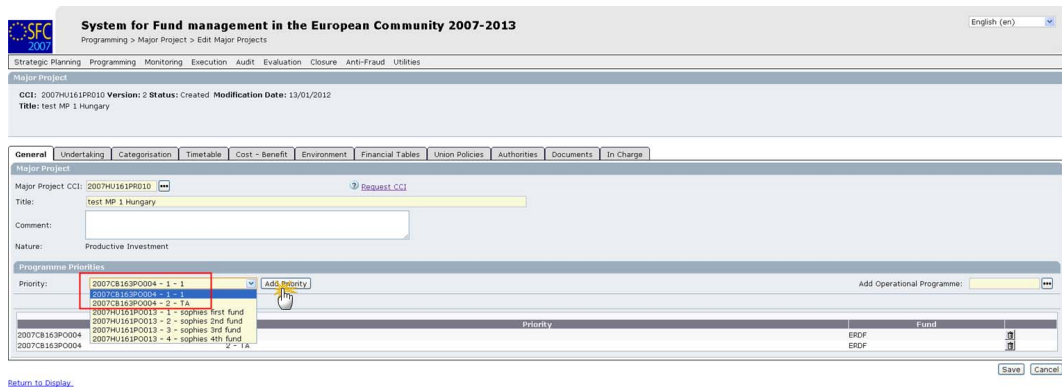


CCI	Priority	Fund
2007CB163P0004	1 - 1	ERDF
2007CB163P0004	2 - TA	ERDF

Clicking on this button will open a POPUP window where the user can select an adopted OP or Cross Border OP.



Once selected the Programme is added and the user is redirected to the General Edit page where the list of Programme Priorities now also contains the adopted priorities of the newly added OP.



A quick guide is also available on the [help page](#) of sfc2007.