

# EU Login - Sign in with an EU Login account using a Trusted Platform or Security Key

In order to increase security for access to all SFC applications (and many other Commission sites), the way in which users can login has been modified.

You can find more information about the different types of authentication by clicking [here](#)

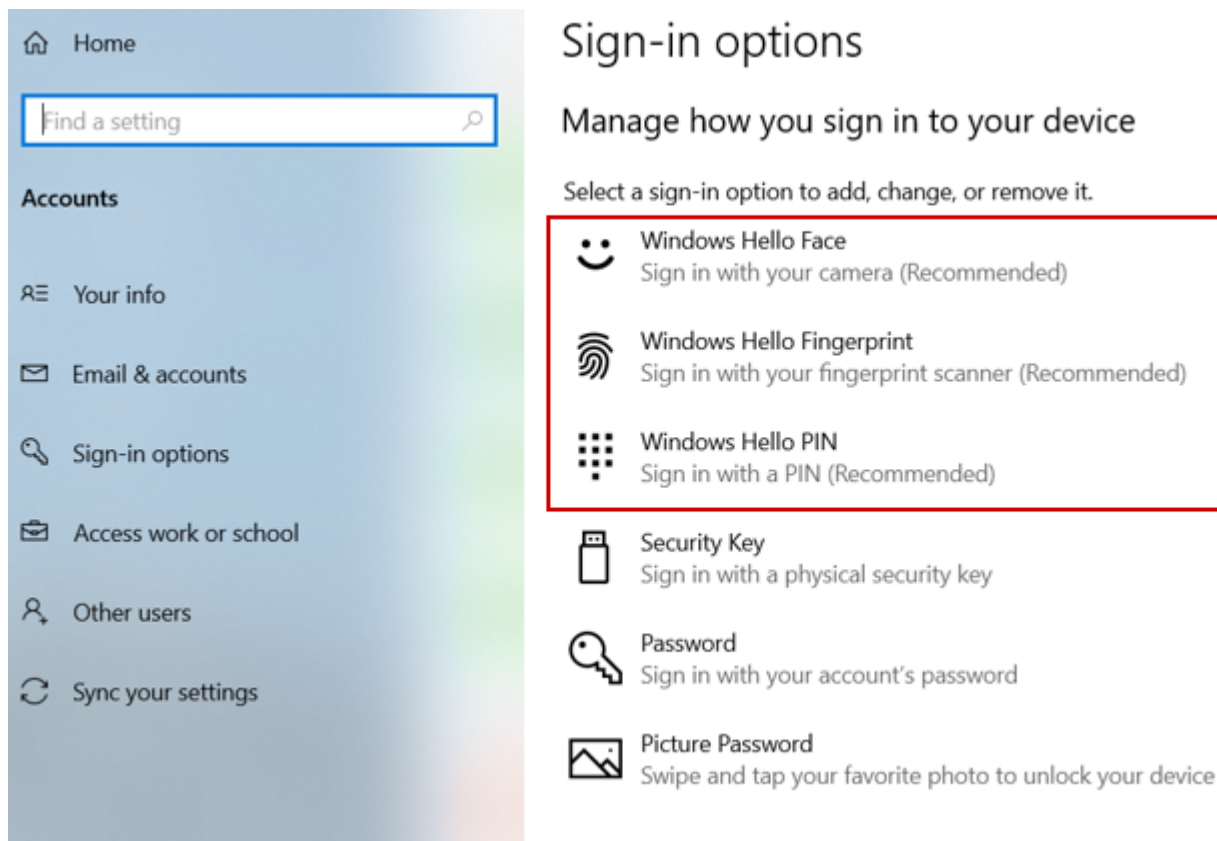
## Security Keys (SK)

A security key is a small physical device that looks like a USB thumb drive, and works in addition to your password.

## Trusted Platforms (TP)

You can use Windows Sign-in options in order to verify your access to SFC.

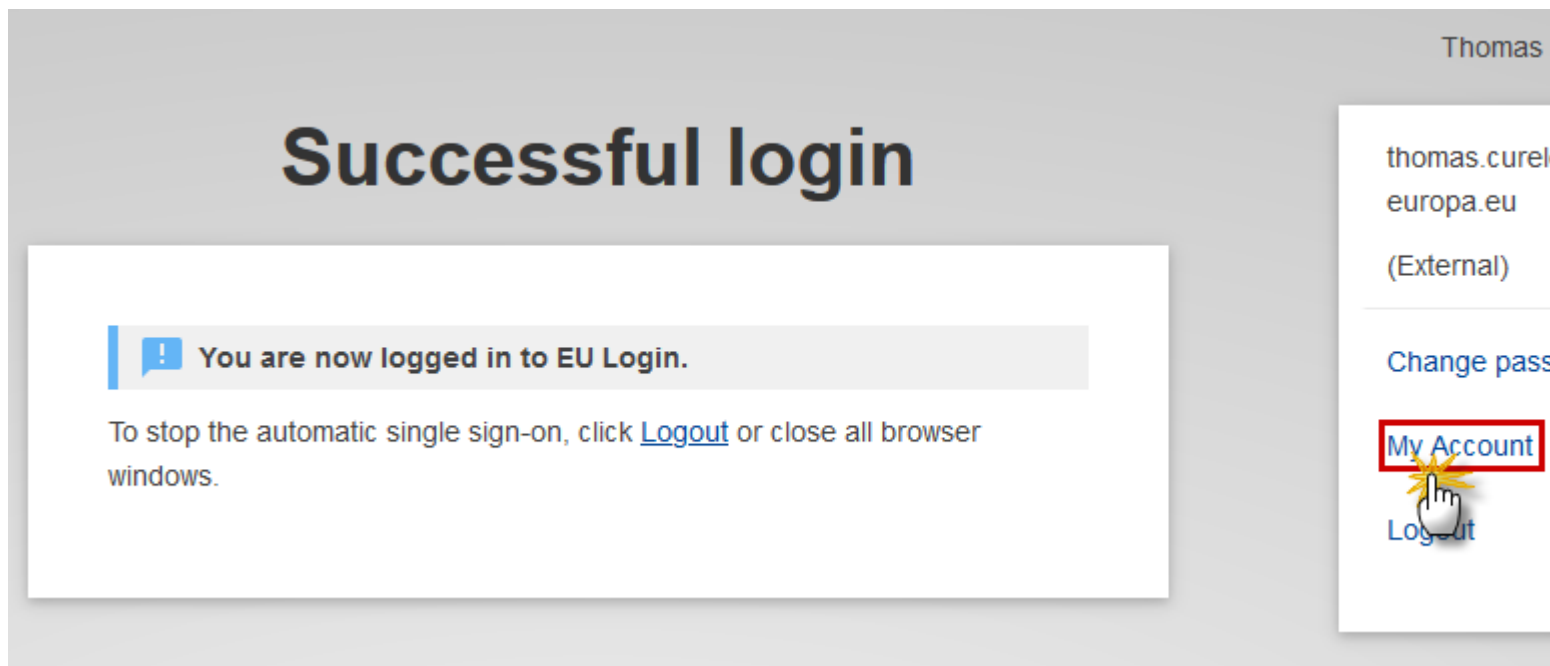
1. To do so, you will first need to set up one of the ‘Windows Hello’ options, by going to your **Windows settings** -> **Sign-in Options** and set up one of the below methods:



\*please request to your IT department if you do not have the administrative rights to activate these options.

2. Then go to the page <https://webgate.ec.europa.eu/cas/login> and sign in using your EU Login & password.

3. Click on the settings button and choose the option "**My account**"



4. Select the option to **Manage Security Keys or Trusted Platforms**:

# My Account



My account details

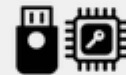


Configure my account

Delete



Manage my mobile  
devices



Manage my Security  
Keys and Trusted  
Platforms

Manag  
phon



Link my eID

You can link your eID to your EU  
Login account.



Display my sessions

You can view the sessions  
opened for visited applications.

5. Select the option to '**Add a Trusted Platform**':

# Manage my Security Keys and Trusted Platforms



Add a Security Key



Add a Trusted Platform

[◀ My Account](#)

6. Give your device a name:

# Add a Trusted Platform

Please give a name to your Trusted Platform.

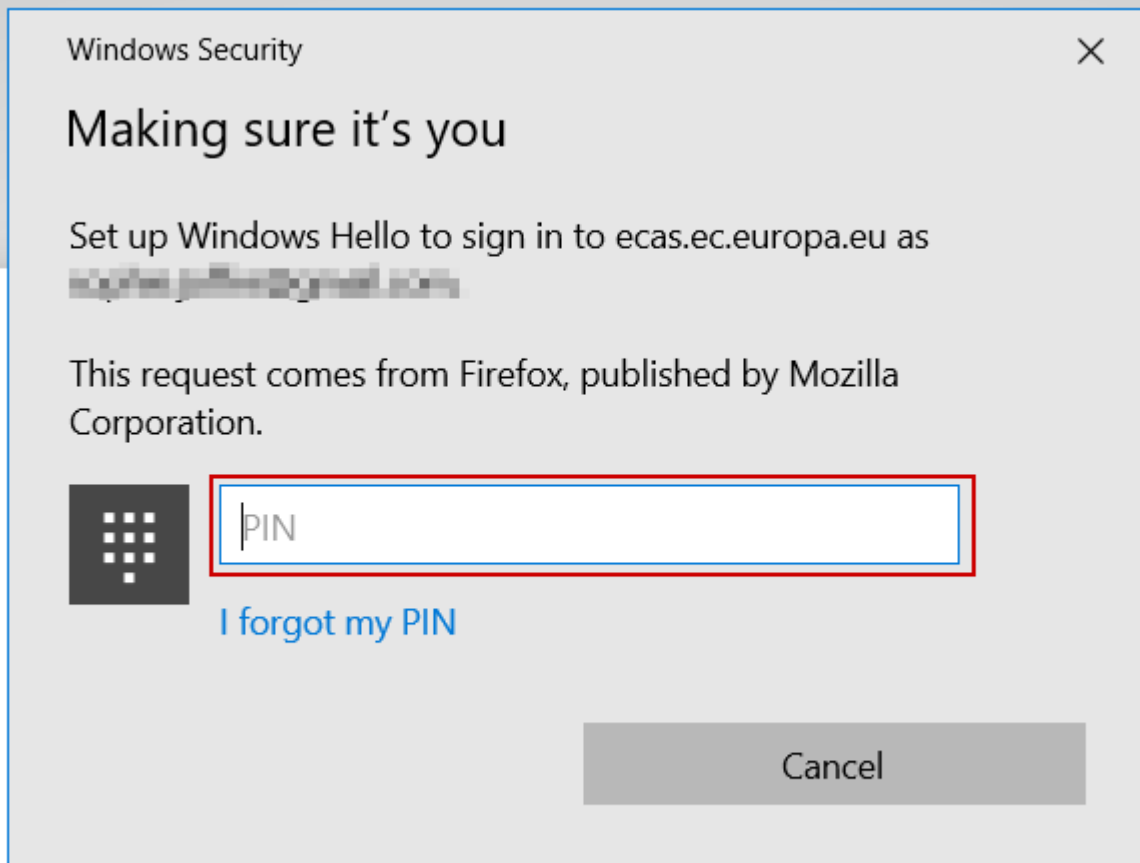
**Your device name**

SFC support

**Submit**

**Cancel**

7. The system will detect which method you have activated using Windows Hello:



You are now set up to use Trusted Platform as your 2 Factor Authentication method:

**Password**

[Lost your password?](#)

**Choose your verification method**

	<b>Security Key or Trusted Platform</b> Use a security key or trusted platform to authenticate with EU Login.	
---	--	---

**Sign in**

[EU Login](#)  
[trusted platform](#)  
[security key](#)  
[View PDF](#)